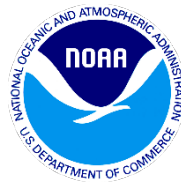


# Mississippi Trustee Implementation Group Draft Restoration Plan 3 and Environmental Assessment

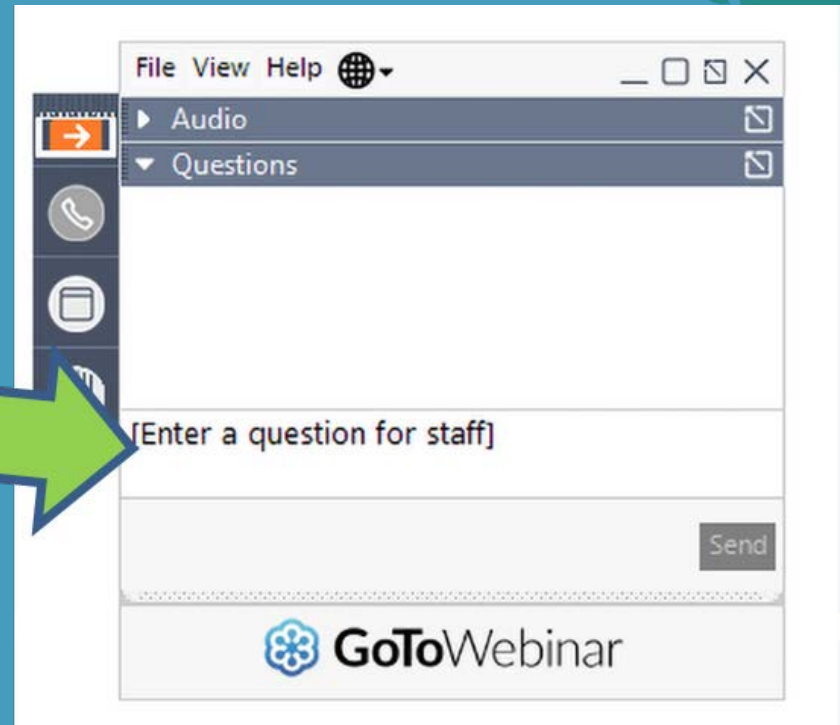
January 11, 2022



# Public Comment Instructions

Use the “Questions” box to type comments for Trustee staff.

Comments will be read on the webinar as time allows.



# Agenda

---

- Restoration Overview
- Review of Draft Restoration Plan 3 and Environmental Assessment
- Public Comments

# Mississippi Restoration Area Representatives

---

Mississippi Department of Environmental Quality

U.S. Department of Agriculture

U.S. Department of the Interior

National Oceanic and Atmospheric Administration

U.S. Environmental Protection Agency

# Allocation of Restoration Funds

Allocation of DWH Settlement Funds for the Mississippi Restoration Area by Restoration Type						
PDARP/PEIS Programmatic Restoration Goal	Restoration Type	Total MS TIG Settlement Funds	Funds Allocated to Monitoring Adaptive Management and Administrative Oversight	Funds Allocated to Early Restoration Projects	Funds Allocated to RP1/EA and RP2/EA Projects	Funds Proposed in this RP3/EA
<b>Restore and Conserve Habitat</b>	Wetlands, Coastal and Nearshore Habitats	\$135,500,000	--	\$80,000,000	\$22,387,500	--
	Habitat Projects on Federally Managed Lands	\$5,000,000	--	--	--	\$3,000,000
<b>Restore Water Quality</b>	Nutrient Reduction	\$27,500,000	--	--	\$4,000,000	--
<b>Replenish and Protect Living Coastal and Marine Resources</b>	Sea Turtles	\$5,000,000	--	--	--	\$2,500,000
	Marine Mammals	\$10,000,000	--	--	--	\$5,440,000
	Birds	\$25,000,000	--	--	-\$5,250,000-	\$6,105,500
	Oysters	\$33,600,000	--	\$13,600,000	\$10,500,000	--
<b>Provide and Enhance Recreational Opportunities</b>	Provide and Enhance Recreational Opportunities	\$23,957,000	--	\$18,957,000	--	\$1,986,000
<b>TOTAL</b>		<b>\$265,557,000</b>	<b>\$30,000,000</b>	<b>\$112,557,000</b>	<b>\$42,137,500</b>	<b>\$19,031,500</b>

# Reasonable Range of Alternatives

Proposed Project	Restoration Type	Proposed Funding
FM1 - Improve Native Habitats by Removing Marine Debris from Mississippi Barrier Islands	Habitat Projects on Federally Managed Lands	\$3 M
FM2 - Habitat Management on the Mississippi Barrier Islands		\$2 M
ST1 - Maintaining Enhanced Sea Turtle Stranding Network Capacity and Diagnostic Capabilities - 3 years	Sea Turtles	\$2.5 M
ST2 - Maintaining Enhanced Sea Turtle Stranding Network Capacity and Diagnostic Capabilities - 5 years		\$4.2 M
MM1- Maintaining Enhanced Marine Mammal Stranding Network Capacity and Diagnostic Capabilities		\$2.35 M
MM2 – Marine Mammal Health Assessments to Monitor Population Health	Marine Mammals	\$3 M
MM3 – Reduction of Marine Mammal Fishery Interactions through Trawl Technique and Component Material Improvements		\$3.1 M

# Reasonable Range of Alternatives

Proposed Project	Restoration Type	Proposed Funding
B1 – Bird Stewardship and Enhanced Monitoring in Mississippi	Birds	\$6.1 M
B2 – Bird Stewardship on the Mississippi Barrier Islands		\$4.1M
REC1 - Clower Thornton Nature Park Trail Improvement	Provide and Enhance Recreational Opportunities	\$630,000
REC2 - Environmental Education and Stewardship at Walter Anderson Museum of Art		\$1.4 M
REC3 – Mississippi Gulf Coast Pier Improvements		\$1.5 M

# Proposed Action for Draft RP 3/EA

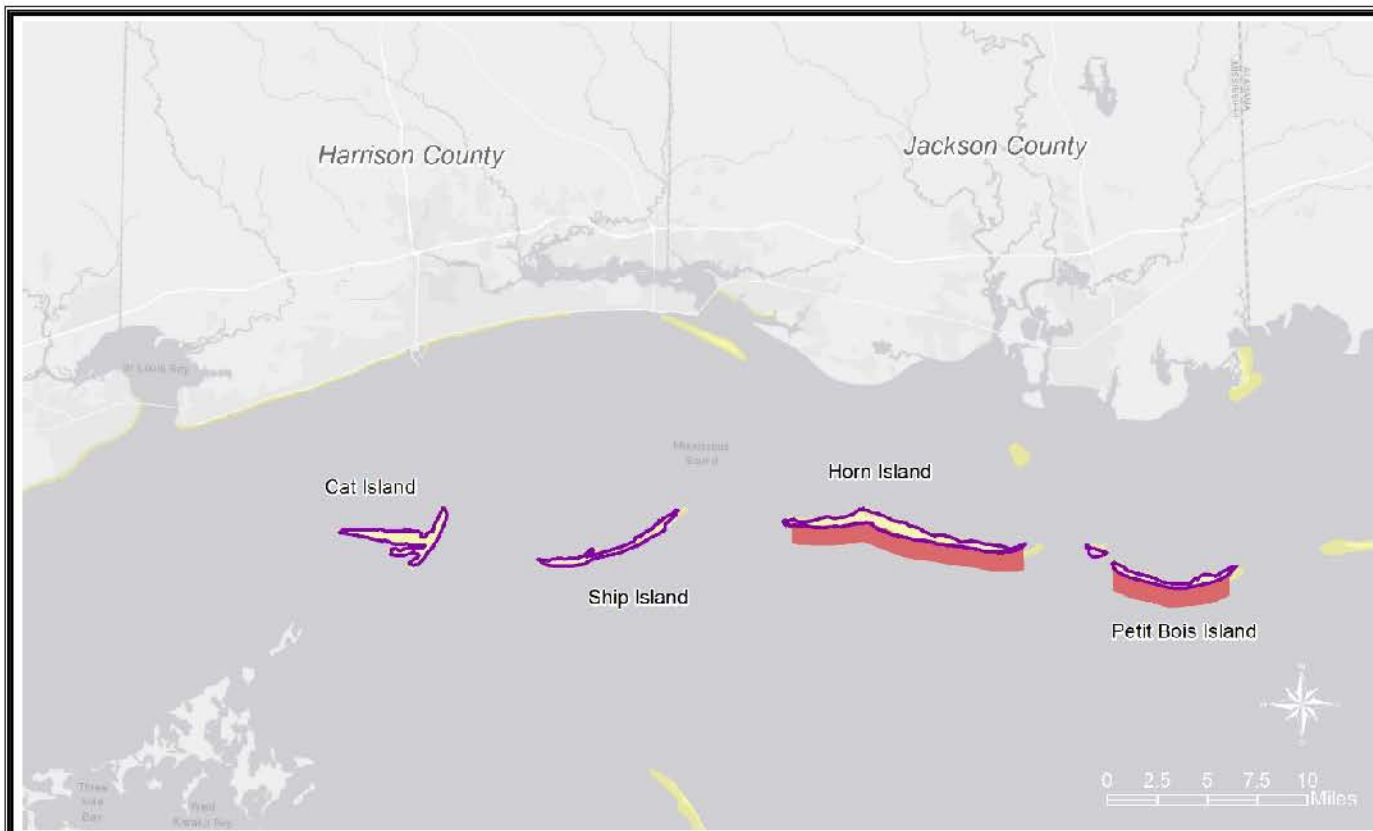
Proposed Project	PDARP/PEIS Restoration Goal: Restoration Type	Proposed Funding
Improve Native Habitats by Removing Marine Debris from Mississippi Barrier Islands	Habitat Projects on Federally Managed Lands	\$3,000,000
Maintaining Enhanced Sea Turtle Stranding Network Capacity and Diagnostic Capabilities	Sea Turtles	\$2,500,000
Maintaining Enhanced Marine Mammal Stranding Network Capacity and Diagnostic Capabilities	Marine Mammals	\$2,350,000
Reduction of Marine Mammal Fishery Interactions through Trawl Technique and Component Material Improvements		\$3,090,000
Bird Stewardship and Enhanced Monitoring in Mississippi	Birds	\$6,105,500
Clover Thornton Nature Park Trail Improvement		\$630,000
Environmental Education and Stewardship at Walter Anderson Museum of Art	Provide and Enhance Recreational Opportunities	\$1,356,000
<b>Total</b>		<b>\$19,031,500</b>





# Habitat Projects on Federally Managed Lands

# Improve Native Habitats by Removing Marine Debris from Mississippi Barrier Islands



## Restoration Plan 3

### Improve Native Habitats by Removing Marine Debris From Mississippi Barrier Islands

 Project Area\*

#### Critical Habitat

 Loggerhead Sea Turtle

 Piping Plover

\*Project Area: Terrestrial areas  
and adjacent shallow water areas  
of the Mississippi barrier islands



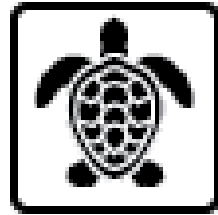
Conceptual project design features represent generalized areas and are subject to refinement



# Proposed Marine Debris Project Specifics

---

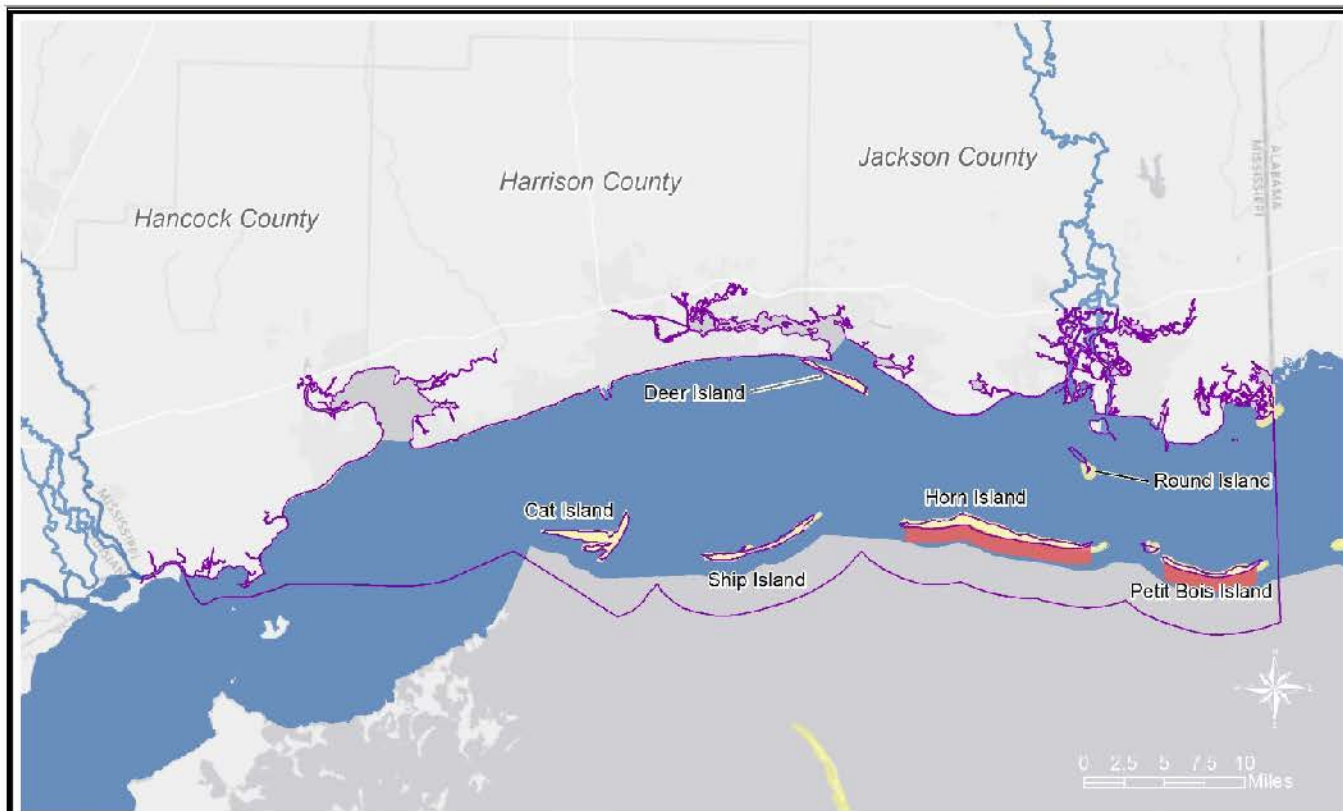
- **Objective: Remove marine debris on MS Barrier island shorelines managed by the NPS Gulf Island National Seashore**
- **Marine Debris represents threats to wildlife species from entanglement, ingestion, transport of invasive species and toxicity**
- **Location: Petit Bois, Horn, Ship islands and part of Cat Island**
- **3 year timeframe**
- **Total Estimated Project Cost: \$3,000,000**



# Sea Turtles



# Maintaining Enhanced Sea Turtle Stranding Network Capacity and Diagnostic Capabilities



Restoration Plan 3

## Maintaining Enhanced Sea Turtle Stranding Network Capacity and Diagnostic Capabilities

 Project Area\*

**Critical Habitat**

 Loggerhead Sea Turtle

 Piping Plover

 Gulf sturgeon

\*Project Area: The entire coastline of Mississippi, including islands, bays, and inland waterways where the strandings occur



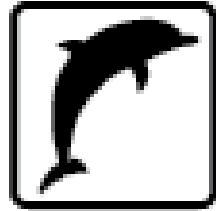
Conceptual project design features represent generalized areas and are subject to refinement



# Proposed Sea Turtle Stranding Network Project Specifics

---

- **Objective: Maintain the enhanced capacity of the MS Stranding Network to respond to stranded, sick, injured or dead sea turtles**
  - **Maintaining Enhanced Stranding Network Capacity**
  - **Assessment of Health and Causes of Mortality**
  - **Maintaining Enhanced Rehabilitation Capacity**
- **Location: Mississippi coastal waters and adjacent bays and estuaries**
- **3 year timeframe**
- **Total Estimated Project Cost: \$2,500,000**

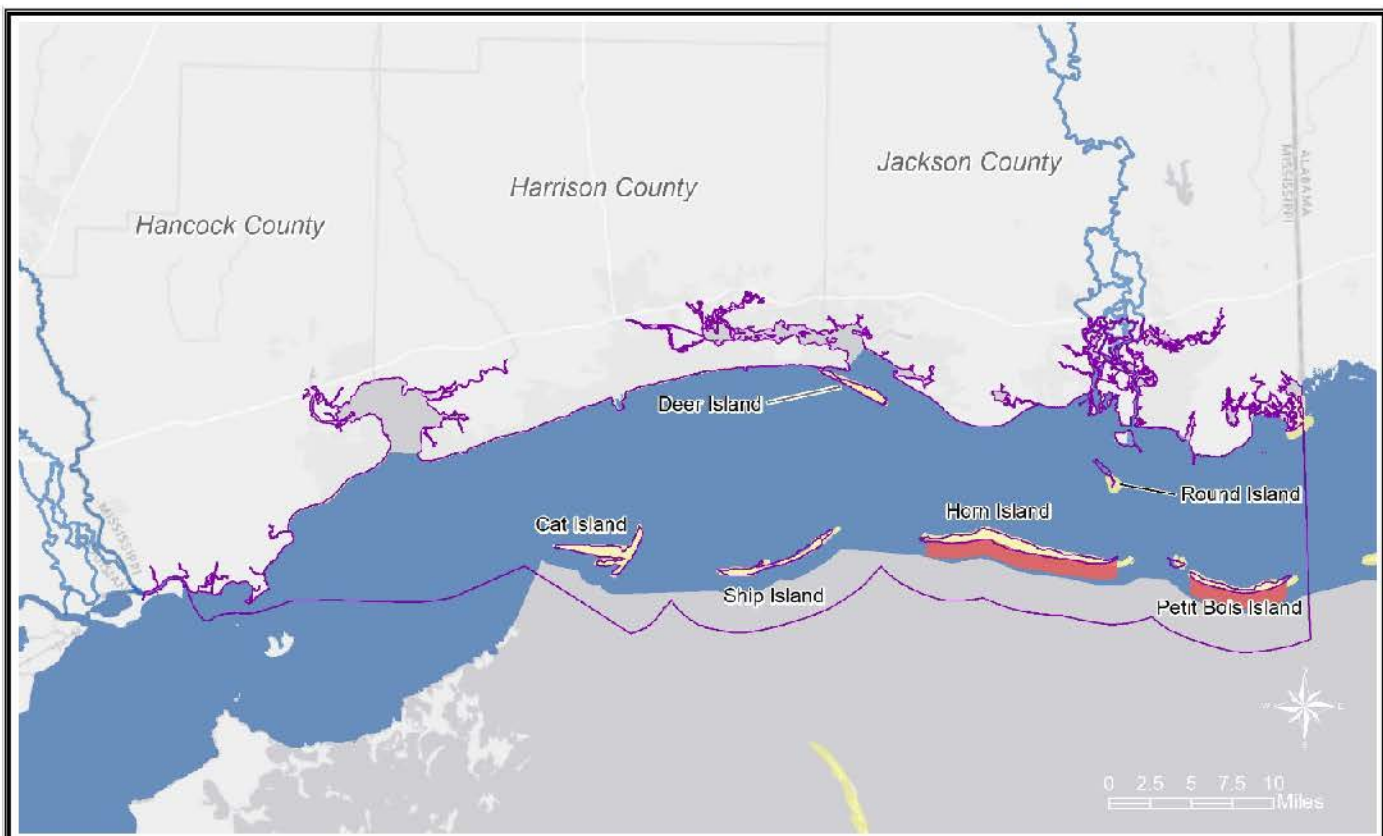


# Marine Mammals





# Maintaining Enhanced Marine Mammal Stranding Network Capacity and Diagnostic Capabilities



Restoration Plan 3

## Maintaining Enhanced Marine Mammal Stranding Network Capacity and Diagnostic Capabilities

Project Area\*

### Critical Habitat

- Loggerhead Sea Turtle
- Piping Plover
- Gulf sturgeon

\*Project Area: The entire coastline of Mississippi, including islands, bays, and inland waterways where the strandings occur

Conceptual project design features represent generalized areas and are subject to refinement







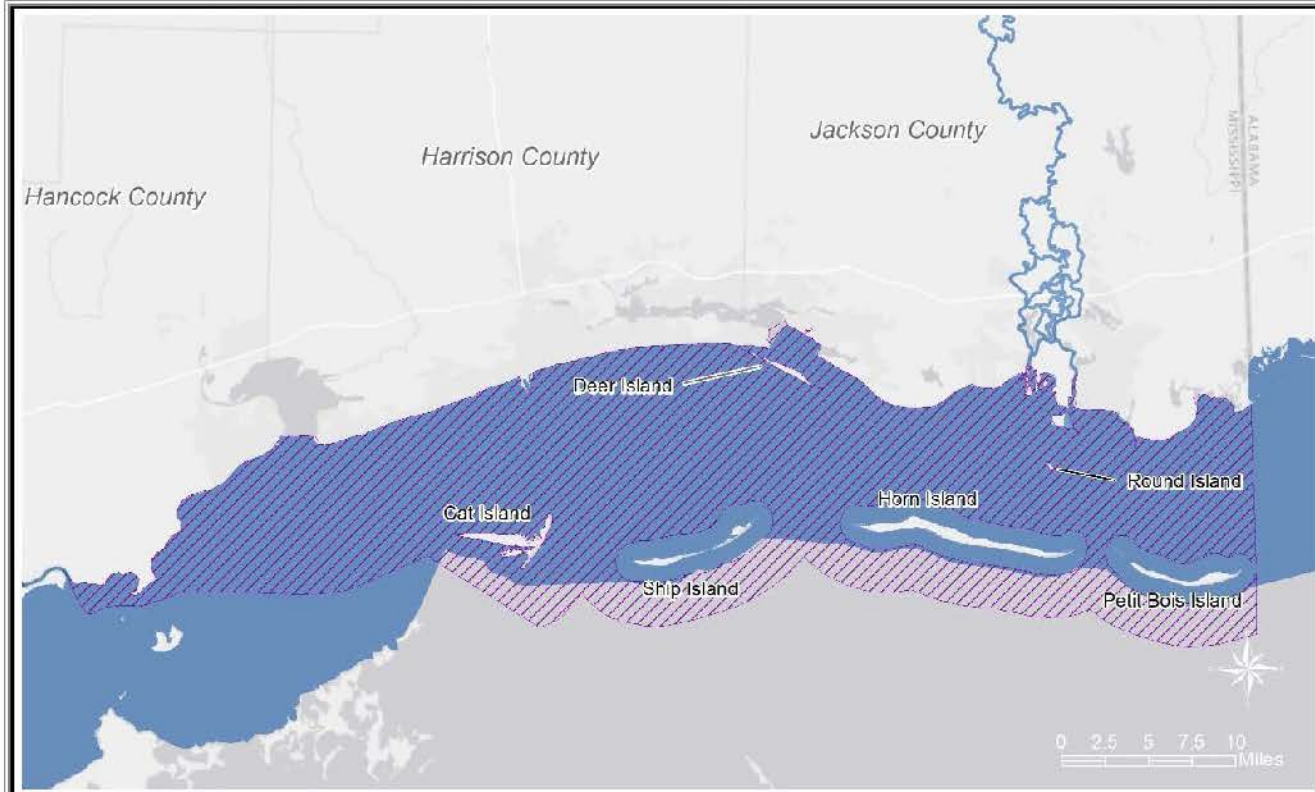
# Marine Mammal Stranding Network Project Specifics

---

- **Objective: Maintain the enhanced capacity of the MS Stranding Network to respond to stranded, sick, or injured marine mammals**
  - **Maintaining Enhanced Stranding Network Capacity and Data Collection**
  - **Assessment of Health and Mortality Dynamics**
- **Location: Mississippi coastal waters and adjacent bays and estuaries**
- **3 year timeframe**
- **Total Estimated Project Cost: \$2,350,000**



# Proposed Reduction of Marine Mammal Fishery Interactions through Trawl Technique and Component Material Improvements



Restoration Plan 3

**Reduction of Marine Mammal Fishery Interactions through Trawl Technique and Component Material Improvements**

-  Project Area
-  Critical Habitat
-  Gulf sturgeon



Conceptual project design features represent generalized areas and are subject to refinement



# Proposed Reduced Marine Mammal Fishery Interactions Project Specifics

---

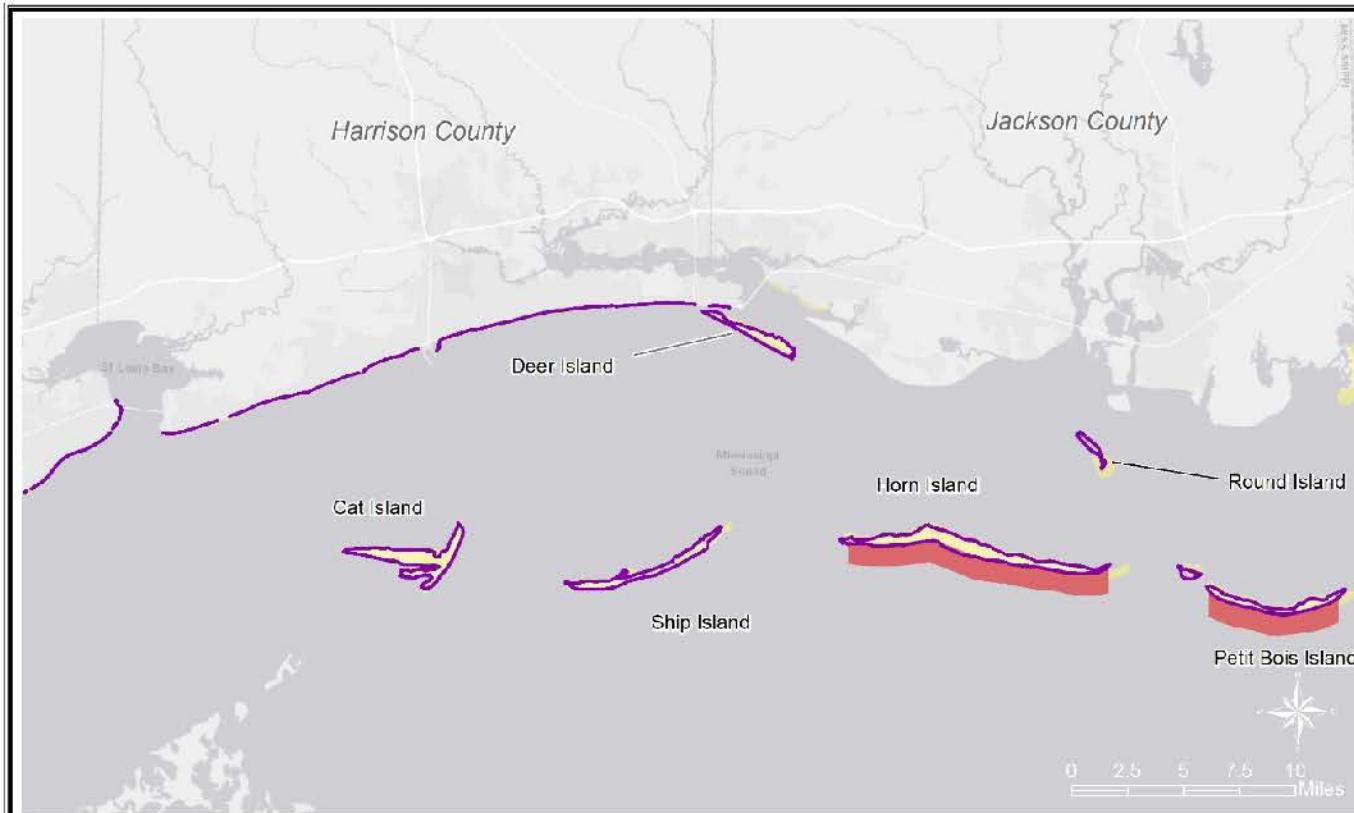
- **Objective: Decrease dolphin injury and mortality caused by commercial fishery shrimp trawl gear interactions**
- **Location: Coastal waters approved for commercial shrimp harvest in Hancock, Harrison, and Jackson Counties**
- **Project would be conducted collaboratively with researchers and the fishing community**
- **5 year timeframe**
- **Total Estimated Project Cost: \$3,090,000**



# Birds



# Proposed Bird Stewardship and Enhanced Monitoring in Mississippi



Restoration Plan 3

## Bird Stewardship and Enhanced Monitoring in Mississippi

— Project Area\*

Critical Habitat

 Loggerhead Sea Turtle

 Piping Plover

\*Project Area: Mainland coastal beaches and terrestrial areas of Deer and Round Islands, and the Mississippi barrier islands



Conceptual project design features represent generalized areas and are subject to refinement



# Proposed Bird Stewardship and Enhanced Monitoring Project Specifics

---

- **Objective: Conserve and enhance nesting and foraging habitats for coastal nesting shorebirds**
- **Location: Mississippi barrier islands (Deer, Petit Bois, Horn, Ship islands and part of Cat Island)**
- **Implementation of stewardship activities would reduce human disturbance of birds and predation of nest and chicks by wildlife**
- **7 year timeframe**
- **Total Estimated Project Cost: \$6,105,500**



# Provide and Enhance Recreational Opportunities





# Proposed Clower Thornton Nature Park Trail Improvement







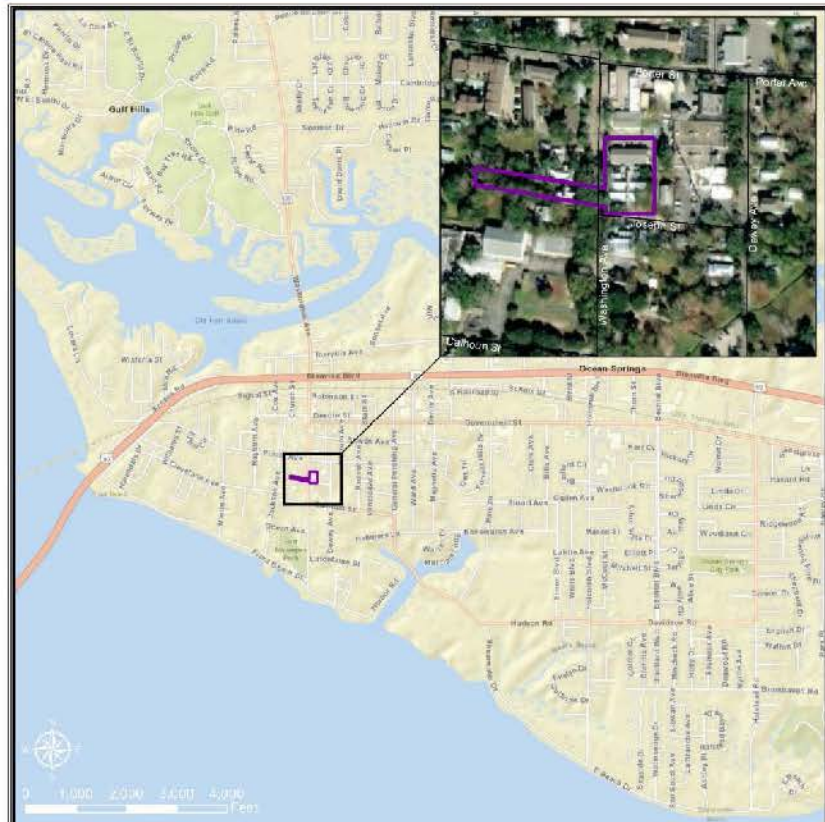
# Proposed Clower Thornton Nature Park Trail Improvement Project Specifics

---

- **Objective:** Restore lost recreational uses by improving access to Gulf natural resources and enhance visitor experience
- **Location:** Clower Thornton Nature Park, Gulfport, Mississippi
- **Installation of new trails/boardwalks and other amenities (educational kiosks/signs) as budget allows**
- **6 year timeframe**
- **Total Estimated Project Cost: \$630,000**



# Environmental Education and Stewardship at Walter Anderson Museum of Art



Restoration Plan 3

**Environmental Education  
and Stewardship  
at Walter Anderson  
Museum of Art**

 Project Area



Conceptual project design features represent generalized areas and are subject to refinement



# Environmental Education and Stewardship Walter Anderson Museum Project Specifics

---

- **Objective:** Restore lost recreational uses by providing a location in which environmental education and outreach would occur
- **Location:** Walter Anderson Museum of Art, Ocean Springs, Mississippi
- **Construction of Education Pavilion and Shoreline Garden**
- **Funding of Arts & Environmental Action, Horn Island Excursions, and Nature-based Artist Residencies**
- **6 year timeframe**
- **Total Estimated Project Cost: \$1,356,000**

# MSTIG Draft RP 3

**MISSISSIPPI TRUSTEE IMPLEMENTATION GROUP  
DRAFT RESTORATION PLAN 3 AND ENVIRONMENTAL  
ASSESSMENT:  
Habitat Projects on Federally Managed Lands; Sea Turtles;  
Marine Mammals; Birds; and Provide and Enhance  
Recreational Opportunities  
December 2021**



# Proposed Action for Draft RP 3/EA

Proposed Project	PDARP/PEIS Restoration Goal: Restoration Type	Proposed Funding
Improve Native Habitats by Removing Marine Debris from Mississippi Barrier Islands	Habitat Projects on Federally Managed Lands	\$3,000,000
Maintaining Enhanced Sea Turtle Stranding Network Capacity and Diagnostic Capabilities	Sea Turtles	\$2,500,000
Maintaining Enhanced Marine Mammal Stranding Network Capacity and Diagnostic Capabilities	Marine Mammals	\$2,350,000
Reduction of Marine Mammal Fishery Interactions through Trawl Technique and Component Material Improvements		\$3,090,000
Bird Stewardship and Enhanced Monitoring in Mississippi	Birds	\$6,105,500
Clover Thornton Nature Park Trail Improvement		\$630,000
Environmental Education and Stewardship at Walter Anderson Museum of Art	Provide and Enhance Recreational Opportunities	\$1,356,000
<b>Total</b>		<b>\$19,031,500</b>



# Public Comments

---

MS TIG Draft RP3/EA and Webinar Materials are available for download here:

<https://www.gulfspillrestoration.noaa.gov/2021/12/mississippi-trustee-implementation-group-releases-third-draft-restoration-plan>

# Public Comments

---

Comments on the Draft RP3/EA can be submitted  
online at:

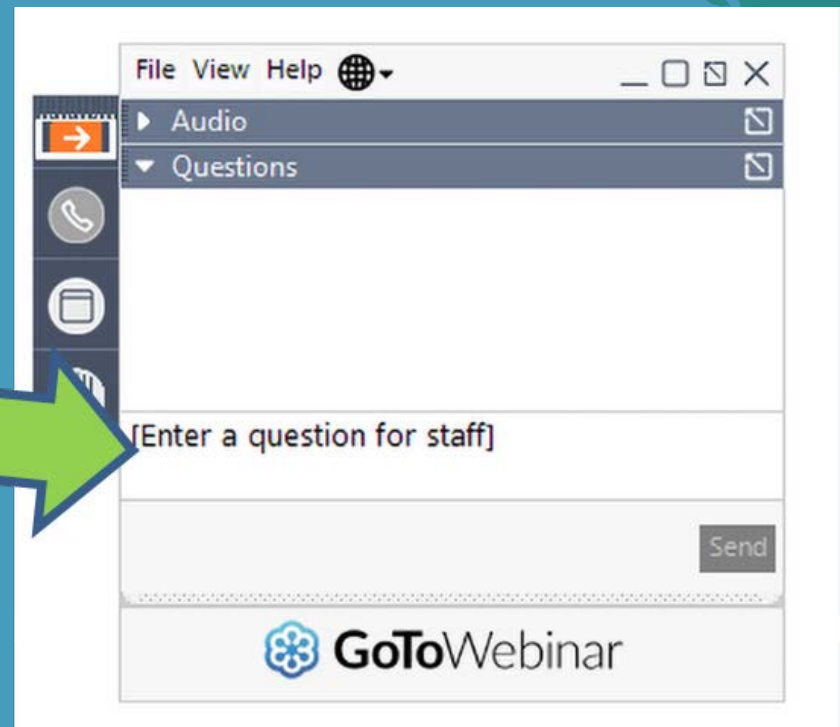
<https://parkplanning.nps.gov/MSTIGRP111>

Comments can be mailed to:  
U.S. Fish and Wildlife Service  
P.O. Box 29649  
Atlanta, Georgia 30345

# Public Comment Instructions

Use the “Questions” box to type comments for Trustee staff.

Comments will be read on the webinar as time allows.







**Thank you**