

Accessing Project Information

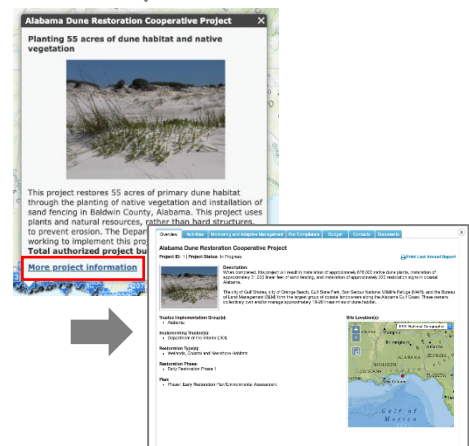
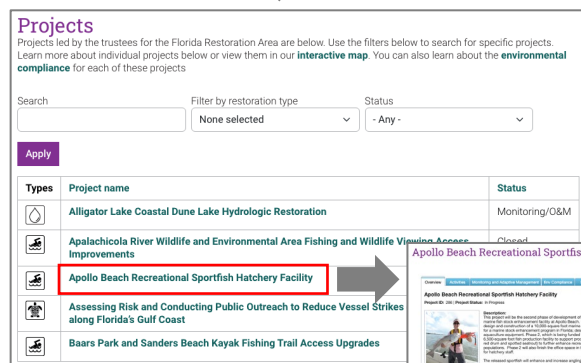
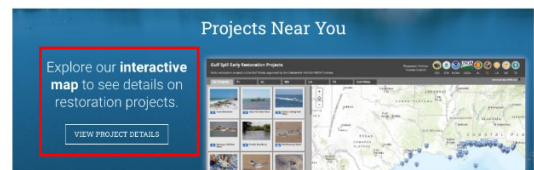
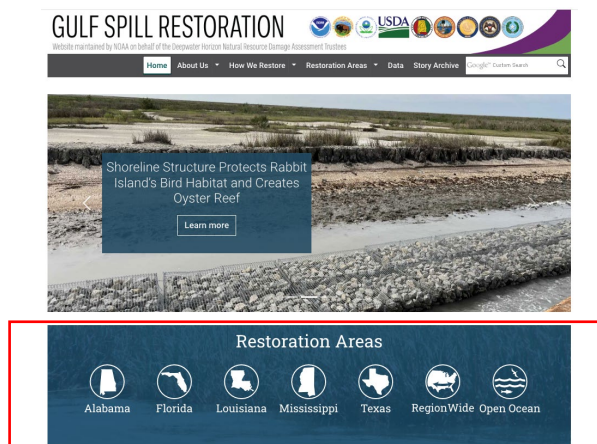
June 2025

HOW TO FIND PROJECT DETAILS ONLINE

The Trustee website is: www.gulfspillrestoration.noaa.gov. The website contains project level information that can be accessed in two ways.

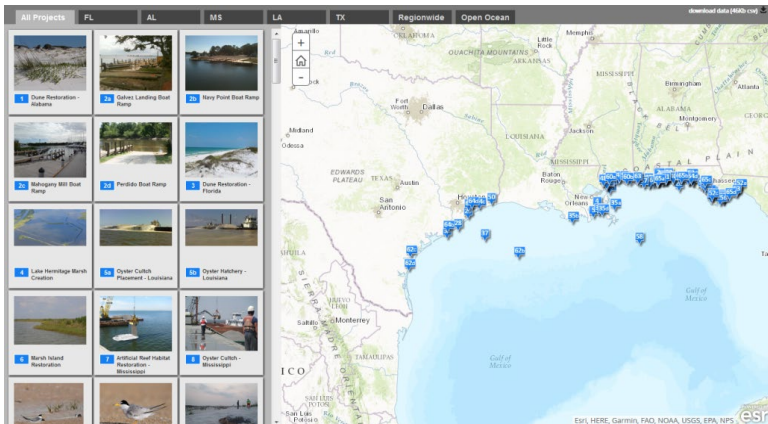
Option 1) Select a restoration area on the homepage, then scroll down to the projects area. Click on a project name to open the details screen.

Option 2) Click “View Project Details” in the Projects Near You section of the homepage, then select the project on the map to open the Details screen.



Accessing Data

June 2025



WHAT WE'VE DONE SO FAR

The Trustees released our eighth annual report to the public to show our restoration progress, as well as how we're spending settlement funds. The project reports are created through the DIVER (Data Integration, Visualization, Exploration, and Reporting) system and are available on each [restoration area](#) page and on the [interactive map](#).

The Cross-TIG Monitoring and Adaptive Management work group will use DIVER to synthesize and evaluate monitoring information across projects and Trustee Implementation Groups.

DIVER: www.diver.orr.noaa.gov/home

ERMA: <https://erma.noaa.gov/gulfofmexico/erma.html>

Trustee Website: www.gulfspillrestoration.noaa.gov/

Project Map: www.habitat.noaa.gov/storymap/dwh/

WHAT WE DO

During the damage assessment, we collected environmental data to document the location and extent of ecosystem injuries. We collected tens of thousands of samples and observations to determine the oil's impact.

We are collecting information on our restoration projects, including monitoring data, and will continue to provide regular updates on project activities and monitoring.

Assessment and restoration information and data are available through two online tools: DIVER and ERMA® (Environmental Response Management Application). DIVER integrates data from many sources, which is a key feature of the system as we work with data partners across the Gulf.